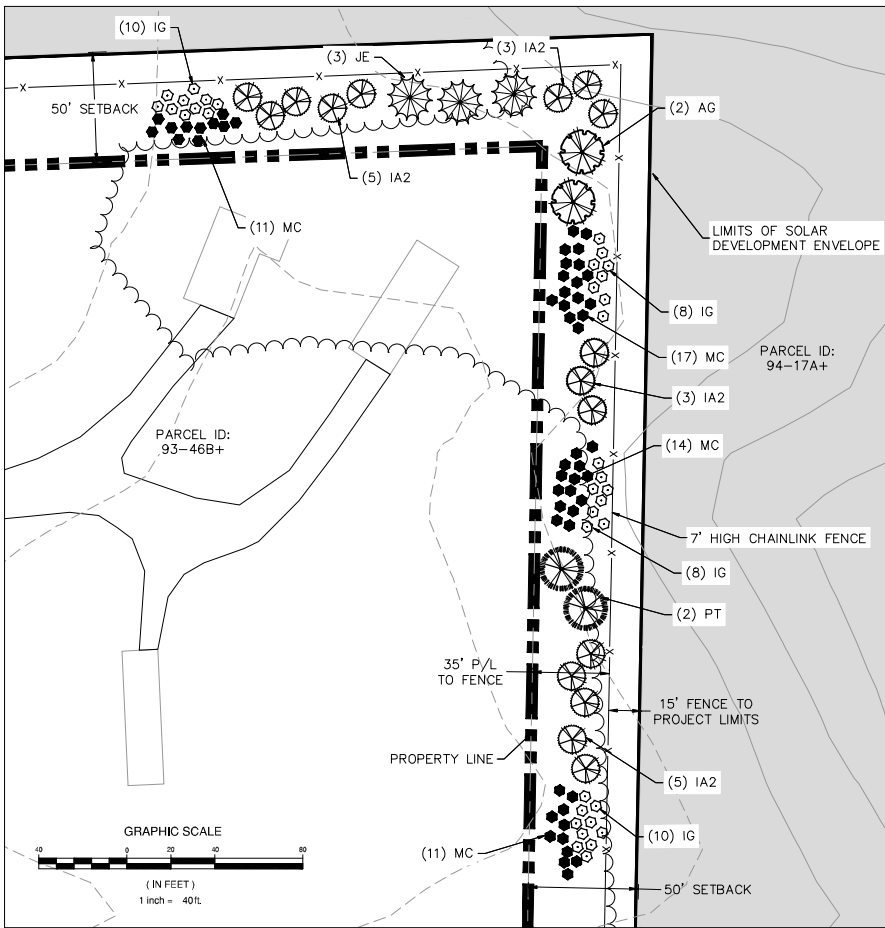
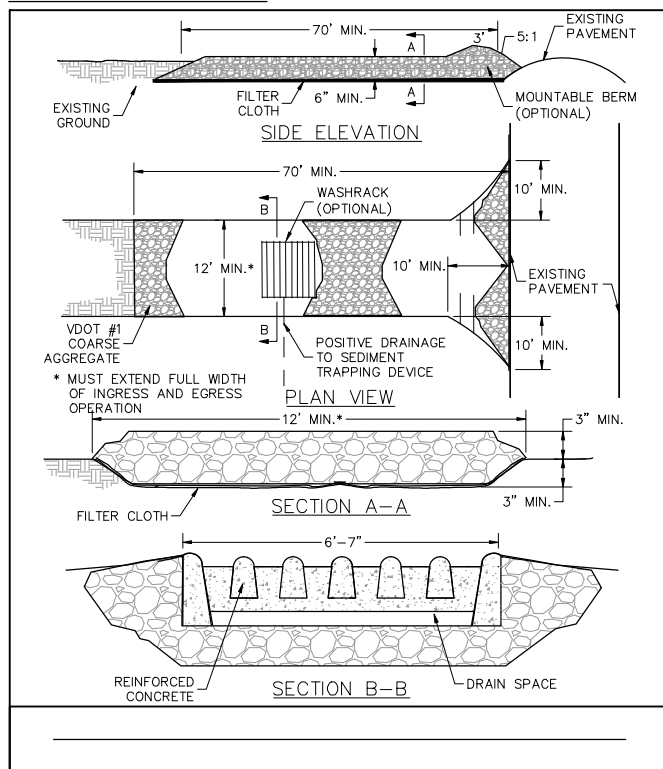


THOMAS JEFFERSON HWY LANDSCAPE BUFFER DETAIL  
1"=40'

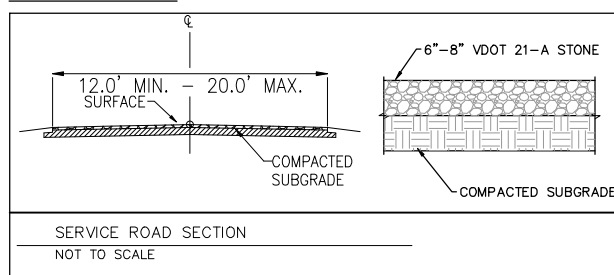


ADJACENT PROPERTY LANDSCAPE BUFFER DETAIL  
1"=40'

#### CONSTRUCTION ENTRANCE DETAIL



#### SERVICE ROAD DETAIL



#### PLANT SCHEDULE

TREES	CODE	BOTANICAL NAME	COMMON NAME	REMARKS
	AG	AMELANCHIER X GRANDIFLORA 'AUTUMN BRILLIANCE'	'AUTUMN BRILLIANCE' SERVICEBERRY	4-5' HT./1.5" CALIPER
	IA2	ILEX OPACA	AMERICAN HOLLY	5-6' HT./1.5" CALIPER
	JE	JUNIPERUS VIRGINIANA	EASTERN RED CEDAR	5-6' HT./1.5" CALIPER
	PT	PINUS TAEDA	LOBLOLLY PINE	7' HT./1.5" CALIPER
	PV	PINUS VIRGINIANA	VIRGINIA PINE	7' HT./1.5" CALIPER
	RM	ACER RUBRUM	RED MAPLE	5-6' HT./1.5" CALIPER
	TP	LIRIODENDRON TULIPIFERA	TULIP POPLAR	5-6' HT./1.5" CALIPER
	RO	QUERCUS RUBRA	RED OAK	5-6' HT./1.5" CALIPER
SHRUBS	CODE	BOTANICAL NAME	COMMON NAME	REMARKS
	IG	ILEX GLABRA	INKBERRY	1 GALLON
	MC	MORELLA CERIFERA	SOUTHERN WAX MYRTLE	1 GALLON

- NOTE:
- THE PLANTING SCHEDULE IS PRELIMINARY AND IS SUBJECT TO CHANGE WITH COUNTY APPROVAL, BASED ON SOIL TYPE, TOPOGRAPHY, AND GEOLOGY.
  - ALL SITE PLANTINGS OF TREES AND SHRUBS SHALL BE ALLOWED TO REACH, AND BE MAINTAINED AT, MATURE HEIGHT; THE TOPPING OF TREES IS PROHIBITED. SHRUBS AND TREES SHALL BE PRUNED MINIMALLY AND ONLY TO SUPPORT THE OVERALL HEALTH OF THE PLANT.
  - A MINIMUM OF 30 TREES OF 7' HEIGHT OR TALLER SHALL BE PLANTED ALONG THOMAS JEFFERSON HIGHWAY (RTE 53).

#### PERMANENT ENTRANCE DETAIL

